



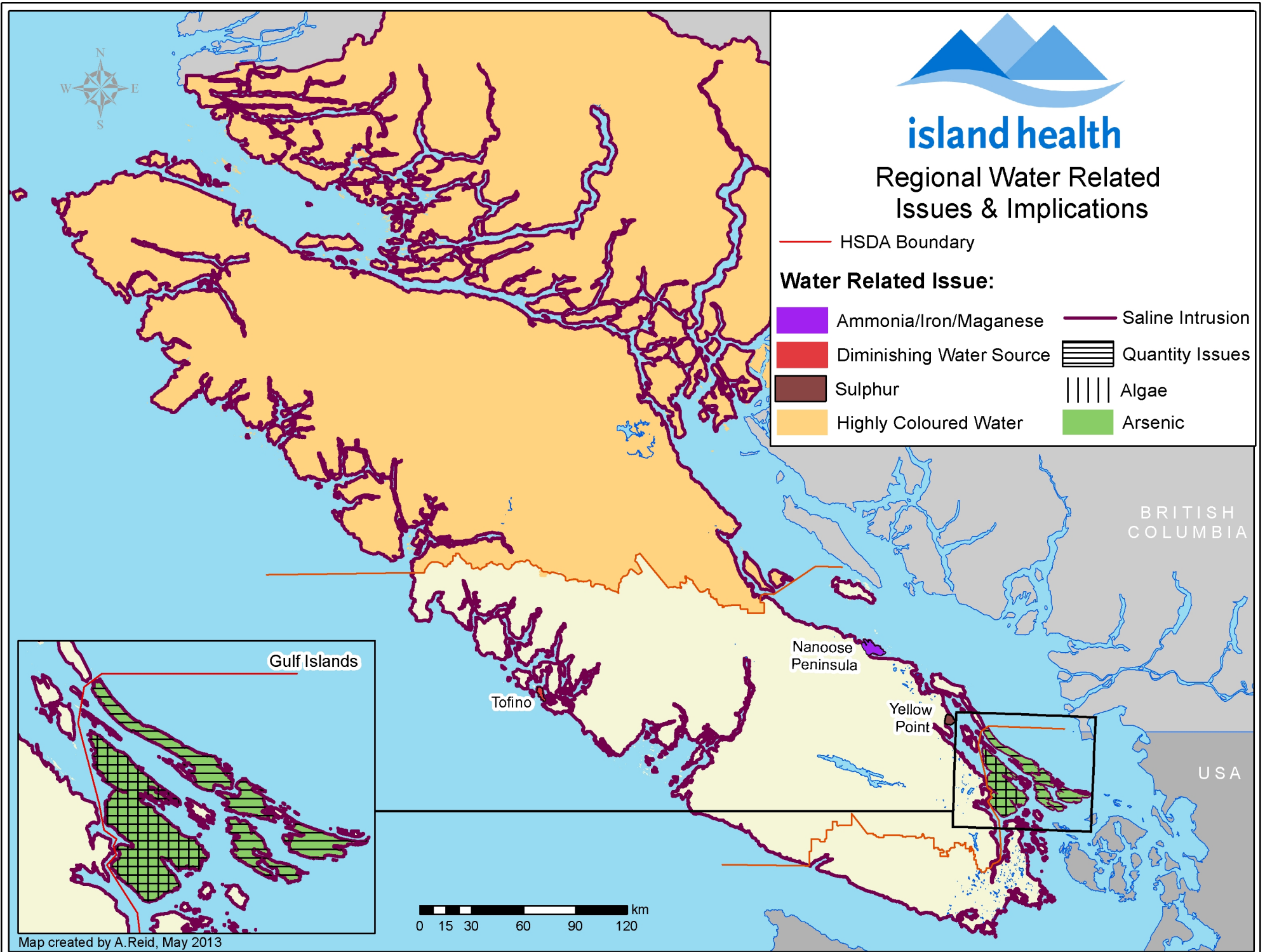
island health

Regional Water Related Issues & Implications

— HSDA Boundary

Water Related Issue:

- | | |
|--------------------------|------------------|
| Ammonia/Iron/Maganese | Saline Intrusion |
| Diminishing Water Source | Quantity Issues |
| Sulphur | Algae |
| Highly Coloured Water | Arsenic |



BRITISH COLUMBIA

USA

Gulf Islands

Tofino

Nanoose Peninsula

Yellow Point

0 15 30 60 90 120 km